

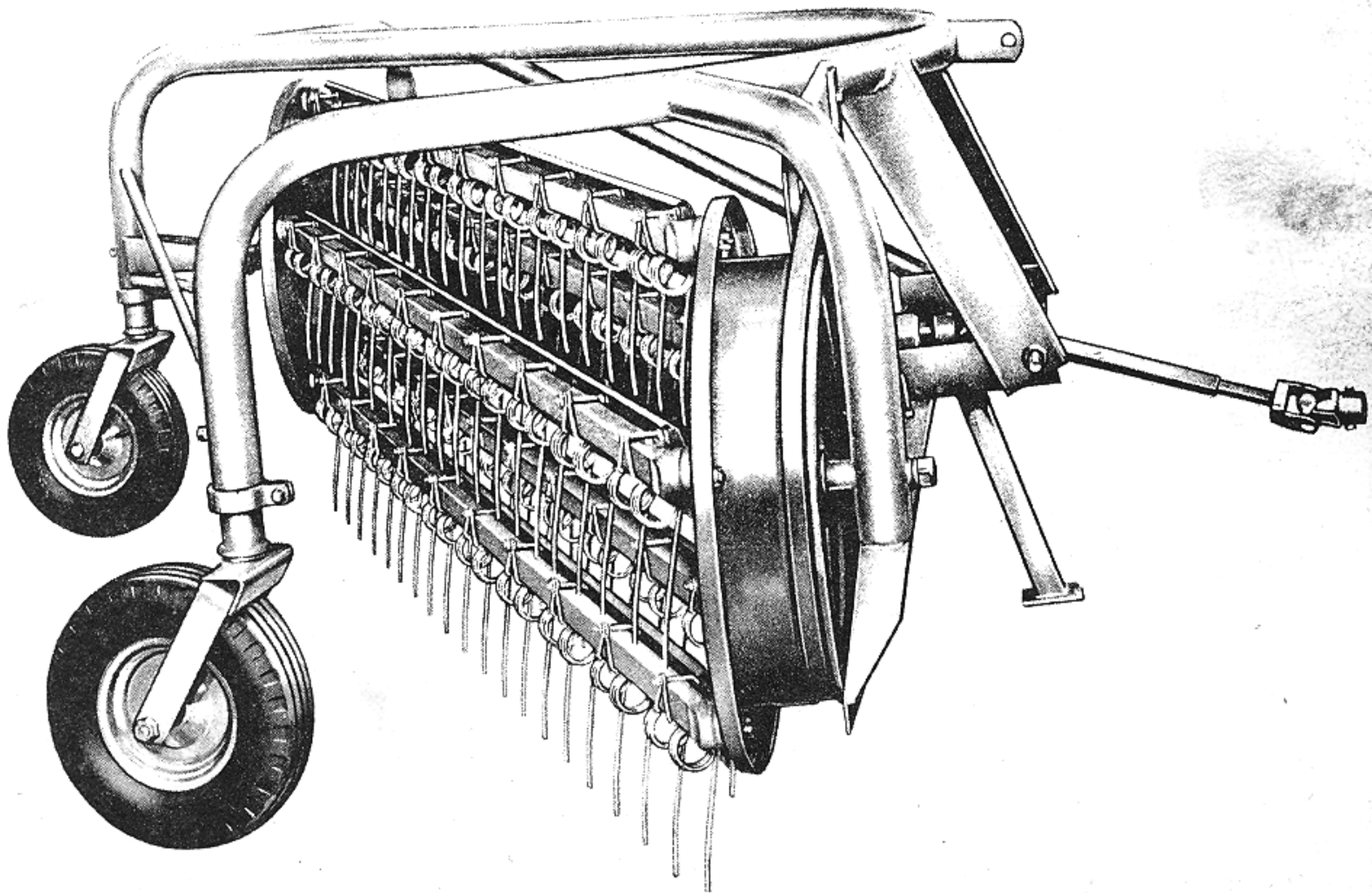
FORD

*Wm Hall
14-72
8574*

503-1, 2

**SIDE DELIVERY
RAKE**

PARTS LIST



Ford Tractor Operations

Printed in the U.S.A.

Troy, Michigan 48084

PA-8450-E
April, 1980

www.ntractorclub.com

Side Delivery Rake

GROUP INDEX

SIDE DELIVERY RAKES - SERIES 503

<u>GROUP NO.</u>	<u>DESCRIPTION</u>	<u>IMAGE LOC.</u>	<u>PAGE NO.</u>
1-1	Frame Parts (14-72,262,263,299,300,400,419)	G2	3
1-2	Drive Parts (14-262,263,299,300,400,419)	G3	4
1-2A	Drive Parts (14-72)	G4	7
1-3	Reel Parts (14-262,263,264,299,300,400,401, 402,419)	G6	10
1-3A	Reel Parts (14-72)	G7	12
1-4	Stripper Parts (14-72,262,263,299,300,400,419)	G8	14
1-5	Gauge Wheel Parts (14-265,419)	G9	16
1-6	Gauge Wheel (Dual) Parts (14-115,266)	G9	17
1-7	Rocker Arm Attachment (240948)	G10	18

PARTS NO LONGER SERVICED

Where a part has been removed from service and not replaced, the part number has been removed from the catalog but the illustration and the description remain.

Side Delivery Rake

MODEL INDEX

<u>MODEL NO.</u>	<u>DESCRIPTION</u>	<u>PAGE NO.</u>
14-72	Rake, Mounted Side Delivery (W/4 - Bar Reel) 1955/63	3,7,12,14
14-115	Dual Wheel Attaching Kit 1955/69	17
14-262	Rake, Mounted Side Delivery (W/4 - Bar Reel) 1961/63	3,4,10,14
14-262	Rake, Mounted Side Delivery (W/5 - Bar Reel) 1961/63	3,4,10,14
14-264	Kit, Mounted Rake Reel Bar Conversion 1961/70	10
14-265	Attachment, Mounted Rake Single Wheel 1961/72	16
14-266	Attachment, Mounted Rake Dual Wheel 1961/72	17
14-299	Rake, Mounted Side Delivery W/4 Bar Reel 1964/71	3,4,10,14
14-300	Rake, Mounted Side Delivery W/5 Bar Reel 1964/71	3,4,10,14
14-301	Kit, Rake Drive Sheave 4" 1961/72	6
14-302	Kit, Rake Drive Sheave 6.75" 1964/70	6
14-400	Rake, Mounted Less Teeth (W/5 Bar Reel) 1971/72	3,4,10,14
14-401	Kit, Mounted Rake Bar W/Rubber Mounted Teeth 1969/-	10
14-402	Kit, Mounted Rake Bar W/Steel Spring Teeth 1969/-	10
14-419	Rake, Mounted Less Bars & Teeth 1973/- (Replaces 14-265,301,400)	3,4,10,14

Side Delivery Rake

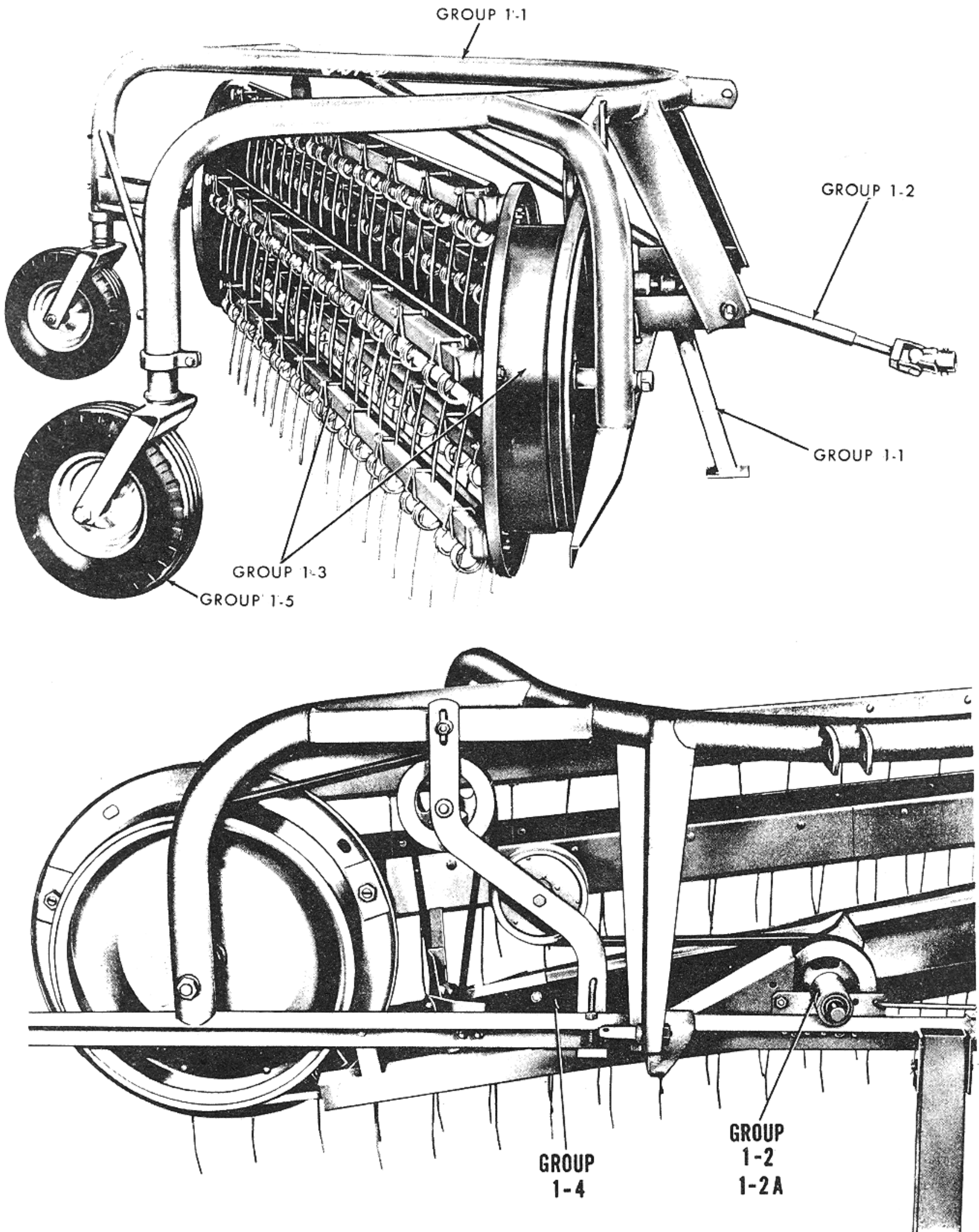


Figure A - Ford Mounted Side Delivery Rake

Side Delivery Rake

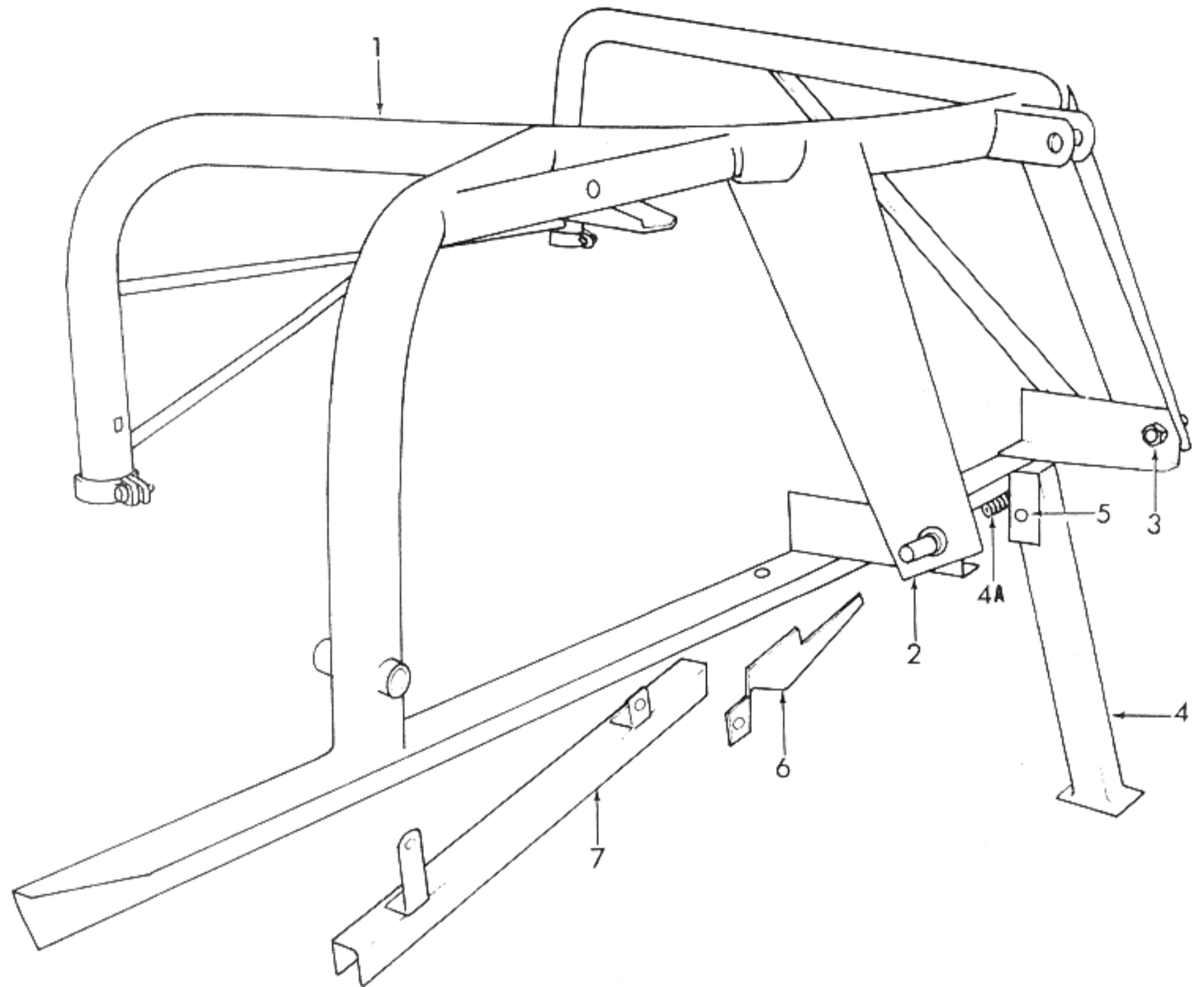


FIGURE 1 - FRAME PARTS

FIG.	PART NO.	NAME AND DESCRIPTION	QTY.	REQ.
			14-72	262,263 299,300 400,419
1		<u>GROUP 1-1 FRAME PARTS</u>		
1	146510	FRAME, Main (Welded Assembly)	1	1
2	PBF 9590	PIN, Link	2	2
		LOCKWASHER, 7/8) Link Pin to Frame	2	2
3		NUT, 7/8 - 14 Hex)	2	2
4	146549	STAND, Rake, Welded Assembly	1	1
4A	140578	SPRING, Stand	1	1
5	146550	PIN, Stand Bracket) Stand to Frame	1	1
-		COTTER PIN, 1/8 x 3/4)	1	1
6	147879 *	GUARD, Belt	1	0
7	240789	SHIELD, Belt (Welded Assembly)	-	1
-	146796*	SHIELD, Belt (Welded Assembly)	1	-
-		BOLT, 5/16 - 18 x 1" Hex Hd.)	2	2
-		LOCKWASHER, 5/16) Shield to Frame	2	2
-		NUT, 5/16 - 18 Hex)	2	2
-	7001542	DECAL, "Ford" I.D. 4 1/4 x 25.42 White Block Letters	1	1
-	149813	DECAL, PTO Instructions	1	1
-	7502413	DECAL, "Be Careful"	-	1
-	150435	DECAL, Main Drive Instructions	-	1
-	150527	DECAL, Series 503	-	1
-				
-				
-				
-				
		* NOT SERVICED		

Side Delivery Rake

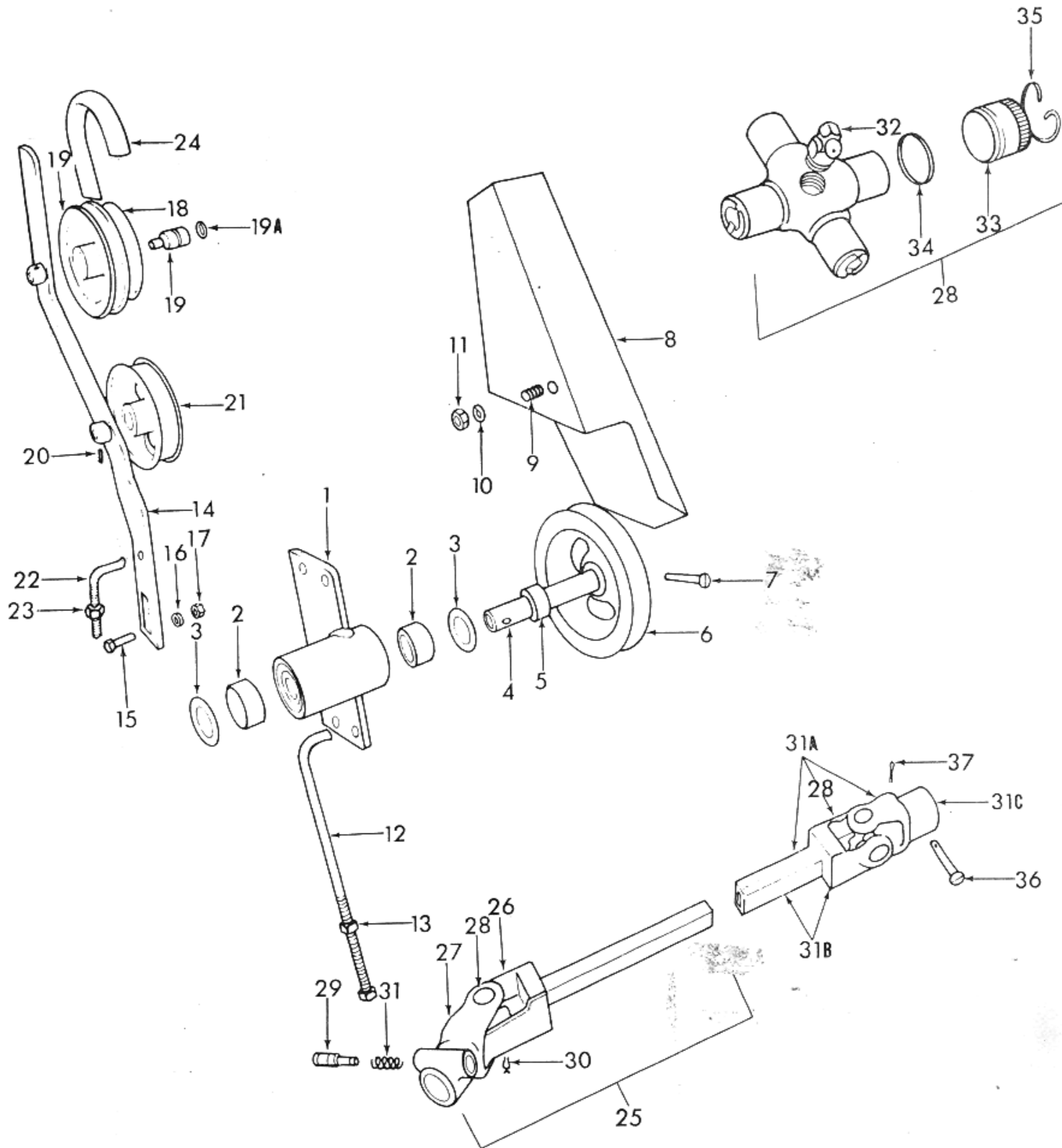


FIGURE 2 - DRIVE PARTS

FIG.	PART NO.	NAME AND DESCRIPTION	QTY. REQ.
2		GROUP 1-2 DRIVE PARTS MODEL 14-262, 263, 299, 300, 400, 419	
1	7502438	HOUSING ASSY., Bearing	1
2	149051	BEARING, Drive	2
3	147081	SHIELD, Bearing Seal	2
4	240795	SHAFT, Drive	1
5	260139++	SPACER (w/14-262, 14-263, & Sheave Kit 14-302 Only)	1
-		BOLT, 7/16-14 x 1 Carr.)	2
-		WASHER, 7/16 Lock) Housing to Main Frame	2
-		NUT, 7/16-14 Hex)	2

Side Delivery Rake

FIG.	PART NO.	NAME AND DESCRIPTION	QTY. REQ.
2		<u>GROUP 1-2 DRIVE PARTS</u> <u>MODELS 14-262,263,299,300,400,419 (CONT'D)</u>	
6	146607++	SHEAVE, Main Drive (W/Models 14-262, 14-263 & Sheave Kit 14-302 Only)	1
-	240793+	SHEAVE, Main Drive 14-419 & Sheave Kit 14-301 Only)	1
7		PIN, 3/8 Clevis) Sheave to Drive Shaft	1
-		COTTER PIN, 3/32 x 5/8)	1
8	240814	SHIELD, Belt	1
9		BOLT, 7/16-14 x 3/4 Hex Hd)	1
10		WASHER, 7/16 Lock) Shield to Housing Bracket	1
11		NUT, 7/16-14 Hex)	1
12	240801	ROD, Sheave Adjusting) Adjust Sheave and Attach	1
13		NUT, 7/16-14 Hex) Rod to Main Frame	2
14	148824	HANGER, Idler	1
15		BOLT, 7/16-14 x 1-1/4 Hex Hd)	2
16		WASHER, 7/16 Flat) Hanger and Belt Shield	1
--		WASHER, 7/16 Lock) to Frame	2
17		NUT, 7/16-14 Hex)	2
18	146572	SHEAVE, Stripper Drive	1
19	146543	BEARING ASSEMBLY	2
19A	146818	RING, Retaining	2
20		PIN, 1/4 x 1 Spring (Sheave to Idler Hanger)	1
21	148825	SHEAVE ASSEMBLY, Idler (including bearing)	1
--	148822	SPACER, 33/64 I.D.)	1
--		BOLT, 1/2-13 x 2-1/2 Hex Hd) Sheave to Idler Hanger	1
--		LOCKWASHER, 1/2)	1
--		NUT, 1/2-13 Hex)	1
22	147074	LINK, Belt Adjusting) To adjust Belt and to	1
23		NUT, 1/2-13 Hex) Attach Link to Frame	1
24	146620	V-BELT, HB Section (EL 49") Stripper Drive	1
--	240831	V-BELT, 139.30 HC Section, Reel Drive	1
25	140854	UNIVERSAL ASSEMBLY - Less Shield (1961/1972)	1
26	146839	Yoke & Shaft Assembly	1
27	149147	Yoke, 1-3/8 Splined	1
28	7501035	KIT, Universal (Service)	AR
29	149116	LOCK PIN ASSEMBLY	1
30	149079	Consists of Pin plus: RING, Retainer	1
31	148466	SPRING, Lock Pin	1
31A	240802	UNIVERSAL ASSEMBLY - Less Shield (1961/72)	1
31B	146842	Consists of: YOKE & TUBE ASSEMBLY	1
31C	240803	YOKE	1
28	7501035	KIT, Universal (Service)	AR
-	7502573	DECAL,P.T.O. Shield Warning	1

Side Delivery Rake

FIG.	PART NO.	NAME AND DESCRIPTION	QTY. REQ.
2		<u>GROUP 1-2 DRIVE PARTS</u> <u>MODELS 14-262,263,299,300,400,419 (CONT'D)</u>	
--	7502432	YOKE & SHAFT ASSY., Use W/Plastic Shield (1973/-) Tractor End	1
--	7502433	YOKE & TUBE ASSY., Use W/Plastic Shield (1973/-)	1
--	7502435	SHIELD, Outer-Plastic (Tractor End) (1973/-)	1
--	7502434	SHIELD, Inner-Plastic (Imp'l. End) (1973/-)	1
--	7502283	BEARING, Shield Support	1
--	7501602	BEARING, 1/3 Segment	6
--	210392	FITTING, Lube 1/4 28 x 7/16 Str. (Center of Drive Shaft)	1
--	7502436	SHIELD, PTO - Bearing, Housing-Oval BOLT, 5/16-18 x 3/4 Hex Hd.) WASHER, 5/16 Flat) Shield to Bearing NUT, 5/16-18 "U"-Type) Housing	1
--	140428	UNIVERSAL ASSEMBLY (Adapts Universal Joint for use on Offset Tractors) Consists of Yoke & Shaft Assy. Plus:	AR
27	149147	YOKE, 1-3/8 Splined	1
28	7501035	KIT, Universal (Service)	AR
29	149116	LOCK PIN ASSEMBLY Consists of Pin plus:	1
30	149079	RING, Retainer	1
31	148466	SPRING, Lock Pin	1
28	7501035	KIT, Universal Joint Consists of Center Cross or Journal plus:	2
32	87914-S8	FITTING, 1/8-27, 65° Lube	1
33	146835*	CUP & NEEDLE ASSEMBLY	4
34	146837*	SEAL	4
35	7501098	RING, Snap	4
36		PIN, 3/8 Clevis)	1
37		COTTER PIN, 3/32 x 5/8) Joint & Tube to Drive Shaft	1
		<u>+ MODEL 14-301 - RAKE DRIVE SHEAVE KIT - 4"</u>	14-301
--	240793	SHEAVE - 4" O.D.	1
		<u>++ MODEL 14-302 - RAKE DRIVE SHEAVE KIT - 6.75"</u>	14-302
--	146607	SHEAVE, Main Drive 6.75" O.D.	1
--	260139	SPACER	1
		* NOT SERVICED	

Side Delivery Rake

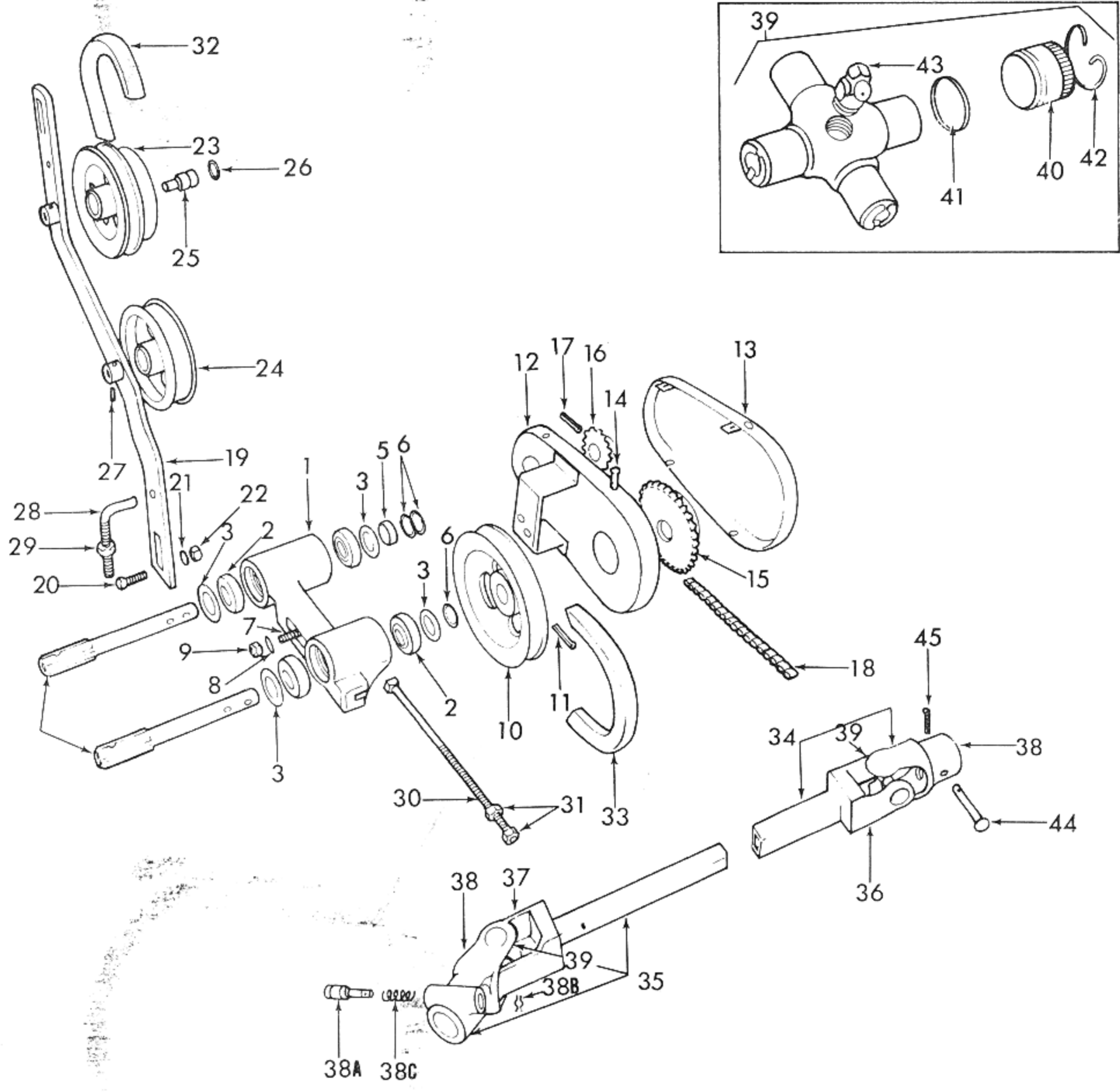


FIGURE 2A - DRIVE PARTS

FIG.	PART NO.	NAME AND DESCRIPTION	QTY. REQ.
2A		<u>GROUP 1-2A - DRIVE PARTS - MODEL 14-72 (1955/61)</u>	14-72
1	146594	HOUSING, Drive	1
2	149051	BEARING, Drive	4
3	147081	WASHER, Bearing	8
4	149050	SHAFT, Main Drive, .99 x 8.26	2
5	146913*	SPACER, 1.04 x 1.35 x .56 Drive	1
6	146810	SHIM, 1-1/32 x 1-1/2 x .029 Drive	2
7		BOLT, 7/16-14 x 1-1/2 Carr)	2
8		LOCKWASHER, 7/16) Housing to Frame	2
9		NUT, 7/16-14 Hex)	2
		* NOT SERVICED	

Side Delivery Rake

FIG.	PART NO.	NAME AND DESCRIPTION	QTY. REQ.
2A		GROUP 1-2A - DRIVE PARTS - MODEL 14-72 (1955/61)(CONT'D)	14-72
10	146607	SHEAVE, Main Drive	1
11		PIN, 3/8 x 1-3/4 Roll	1
12	146791*	SHIELD, Chain (Welded Assembly)	1
13	146790*	SHIELD, Chain Rear	1
14		BOLT, 1/4-20 x 1/2 Carr.) Shields	8
--		NUT, 1/4-20 Spring (Trim)	8
15	146802	SPROCKET, Main Drive	1
16	243133	SPROCKET, Small	1
17		PIN, 3/8 x 1-3/4 Roll - Sprockets	2
18		CHAIN ASSY, (50 Links of 1/2", #40 Roller Chain)	1
--		LINK, Riveted Type (Service from 173023)	49
--	164152	LINK, Connector	1
--	164154	LINK, Offset	AR
--	164153	LINK, Roller	AR
--	173023	CHAIN ASSY., (100 Links of 1/2", #40 Roller Chain)	AR
19	146568*	HANGER, Idler (Welded Assembly)	1
--	148824++	HANGER, Idler (Welded Assembly)	1
20		BOLT, 7/16-14 x 1-1/4 Hex Hd)	1
--		WASHER, 7/16 Flat) Hanger to Frame	1
21		WASHER, 7/16 Lock)	1
22		NUT, 7/16-14 Hex)	1
23	146572	SHEAVE, Stripper Drive	1
24	146793*	SHEAVE, Idler	1
--	148825++	SHEAVE, Idler (Includes Bearing)	1
--		BOLT, 1/2-13 x 2-1/2 Hex Hd)	1
--		WASHER, 1/2 Lock) Sheave to Hanger	1
--		NUT, 1/2-13 Hex)	1
25	146543	BEARING, Sheave (One used after 14-72 - 3501)	2
26	146818	RING, Retaining (One used after 14-72 - 3501)	2
27	305088*	PIN, 1/4 x 1-1/8 Roll - Bearings (One used after 14-72 3501)	2
--	148822	SPACER, Idler, .51 x .81 x .43	1
28	147074	LINK, Belt Adjusting	1
--		WASHER, 1/2 Flat) Link to Hanger	1
29		NUT, 1/2-13 Hex)	1
30	146616*	BOLT, 7/16-14 x 10-1/4 (Special) Sheave Adjusting	2
31		NUT, 7/16-14 Hex)	2
32	146620	V-BELT, 49"	1
33	146619	V-BELT, 144-7/8	1
34	146843*	UNIVERSAL ASSEMBLY, Square Tube End	1
		Consists of:	
36	146842	YOKE & TUBE ASSY. (Welded)	1
--	146838	YOKE, Splined 1-1/8	1
39	7501035	KIT, Universal Joint (Service)	1
		++ Eff. W/14-72 - 3501	
		* NOT SERVICED	

Side Delivery Rake

FIG.	PART NO.	NAME AND DESCRIPTION	QTY. REQ.
2A		GROUP 1-2A - DRIVE PARTS - MODEL 14-72 (1955/61)(CONT'D)	14-72
35	140854	UNIVERSAL ASSEMBLY, Square Shaft, 1-3/8 Spline (16" Shaft)	1
		Consists of:	
37	146839	YOKE & SHAFT ASSEMBLY	1
38	149147	YOKE, 1-3/8 Spline	1
39	7501035	KIT, Universal (Service)	1
38A	149116	LOCK PIN ASSEMBLY	1
		Consists of Pin plus:	
38B	149079	RING, Retainer	1
38C	148466	SPRING, Yoke	1
--	140428	UNIVERSAL ASSEMBLY (Adapts Universal Joint for use on Offset Tractors)	1
		Consists of Yoke & Shaft Assy. Plus:	
38	149147	YOKE, 1-3/8 Splined	1
39	7501035	KIT, Universal (Service)	1
38A	149116	LOCK PIN ASSEMBLY	1
		Consists of Pin plus:	
38B	149079	RING, Retainer	1
38C	148466	SPRING, Yoke	1
39	7501035	KIT, Universal Joint	2
		Consists of:	
40	146835*	CUP & NEEDLE ASSEMBLY	4
41	146837*	SEAL	4
42	7501098	RING, Snap	4
43		FITTING, 1/8 x 65° Lube	1
44		PIN, 3/8 Clevis) Joint & Tube to	1
45		COTTER PIN, 3/32 x 5/8) Drive Shaft	1
* NOT SERVICED			

Side Delivery Rake

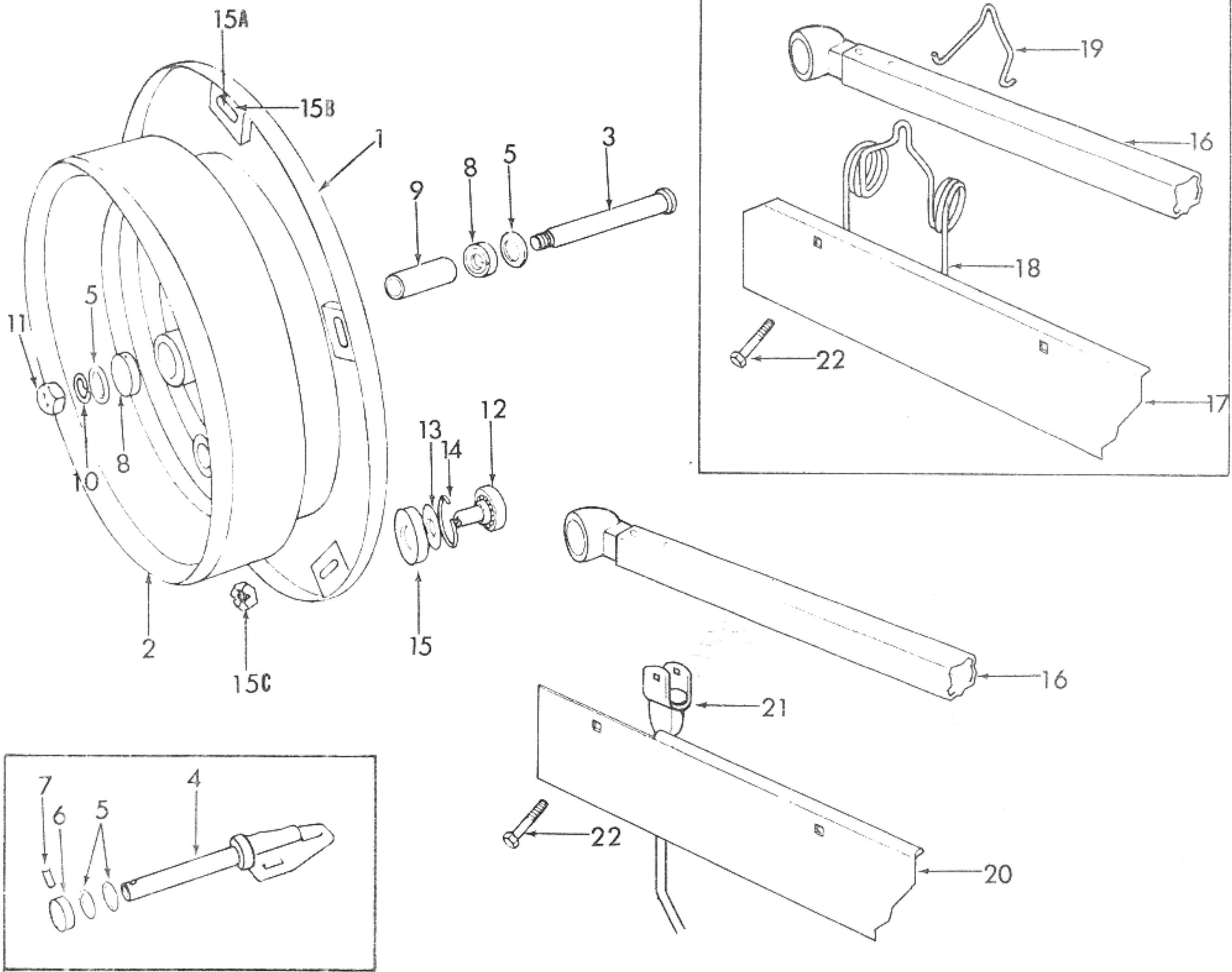


FIGURE 3 - REEL PARTS

FIG.	PART NO.	NAME AND DESCRIPTION	QTY. REQ.				
			14-400	14-262	14-263	14-264	14-401
3		<u>GROUP 1-3 REEL PARTS</u>	419	299	300		402
1	240832	REEL, Rake	2	2	2	2	2
2	240854	SHEAVE, Reel	1	1	1	1	1
-		BOLT, 5/16 - 18 x 3/4 Hex Hd.)	5	5	5	5	5
-		LOCKWASHER, 5/16) Sheave to	5	5	5	5	5
-		NUT, 5/16 - 18) Reel	5	5	5	5	5
3	146808	SPINDLE, Front	1	1	1	1	1
4	146535	SPINDLE, Rear	1	1	1	1	1

Side Delivery Rake

FIG.	PART NO.	NAME AND DESCRIPTION	QTY. REQ.				
			14-400	14-262	14-263	14-264	14-401
			419	299	300		402
3		<u>GROUP 1-3 REEL PARTS (CONT'D)</u>					
-		BOLT, 1/2 - 13 x 1-1/2 Hex Hd.) Rear	3	3	3	-	3
-		WASHER, 1/2 Flat) Spindle	6	6	6	-	6
-		LOCKWASHER, 1/2) to Main	3	3	3	-	3
-		NUT, 1/2 - 13 Hex) Frame	3	3	3	-	3
5	146810	SHIM, 1-1/32 x 1-1/2 x .029	AR	AR	AR	-	AR
6	146537	COLLAR, Spindle Rear	1	1	1	-	1
7	352506-S	PIN, 1/4 x 1-1/2 Spring	1	1	1	-	1
8	149051	BEARING, 1 x 2 x .562 Roller	4	4	4	-	4
-	147081	SHIELD, Bearing Seal	4	4	4	-	4
9	146811	SPACER, 1 x 4.5 Pipe)	1	1	1	-	1
10		LOCKWASHER, 7/8) Front Spindle & Reel	1	1	1	-	1
11		NUT, 7/8 - 9 Hex) to Main Frame	1	1	1	-	1
--	240817 *	HOUSING, Tooth Bar Bearing		8	10	2	10
12	242117	BEARING ASSY, Tooth Bar		8	10	2	10
13	148164	WASHER, 49/64 x 2 x 1/8 Countersunk		8	10	2	10
14	97632-S	RING, Snap - Internal		8	10	2	10
15	148163	CUP, Bearing		8	10	2	10
15A	106966	KEY, Reel Plate (Used W/242117)		8	10	2	10
15B	106964	PLATE, Reel Bearing		8	10	2	10
--		WASHER, 3/4 Lock) Tooth Bar to Reel		8	10	2	10
15C		NUT, 3/4 - 16 Hex)		8	10	2	10
<u>Note: 14-401, 402 Split</u>							
			14-401				14-402
16	240815	BAR ASSY, Tooth	5	4	5	1	5
17	240844	SHIELD, Tooth	--	20	25	5	25
18	146545	TOOTH, Spring Steel	-	40	50	10	50
19	146546	CLAMP, Tooth Spring	-	40	50	10	50
20	7500856	SHIELD, Tooth 16.56"	20	-	-	-	-
--	7500973	SHIELD, Tooth 11.04"	5	-	-	-	-
--	7500974	SHIELD, Tooth 20.00"	5	-	-	-	-
21	7500817	TOOTH, Rubber	90	-	-	-	-
22	7500989	BOLT, 5/16-18 x 2-1/4 Carr.)	90	-	-	-	-
--		BOLT, 5/16-18 x 2-1/2 Carr.) Shield, Tooth	-	40	50	10	50
--		WASHER, 5/16 Flat) Clamp to Toot	-	40	50	10	50
--		LOCKWASHER, 5/16) Bar	-	40	50	10	50
--		NUT, 5/16 - 18 Hex)	-	40	50	10	50
--		NUT, 5/16 - 18 Hex, Lock)	90	-	-	-	-
*No longer serviced							

Side Delivery Rake

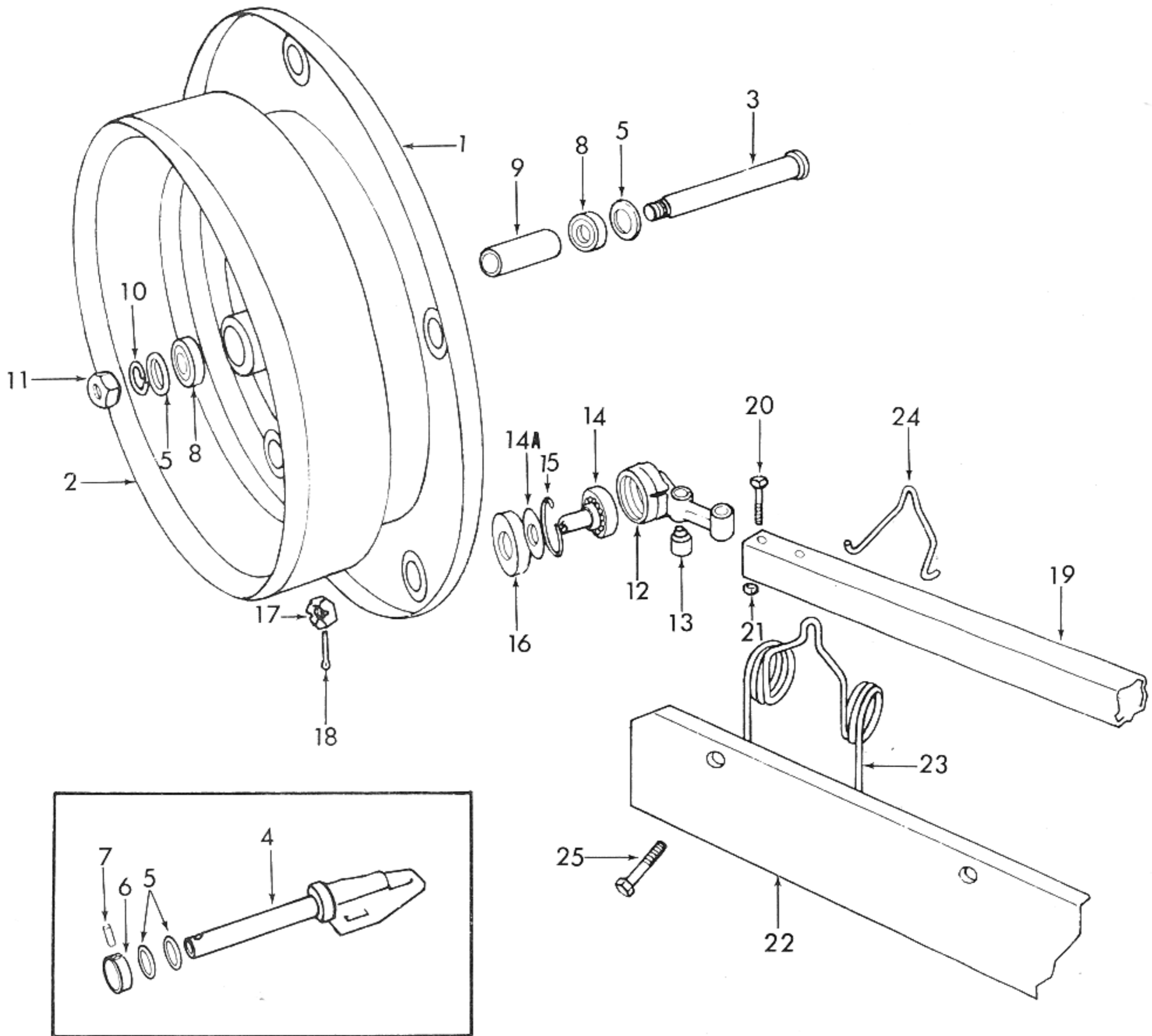


FIGURE 3A - REEL PARTS

Side Delivery Rake

FIG.	PART NO.	NAME AND DESCRIPTION	QTY. REQ.
3A		<u>GROUP, 1-3A REEL PARTS - MODEL 14-72</u>	
1	146534*	REEL, Rake (Welded Assy) (Used Prior to 14-72 - 14624)	2
-	240166*	REEL, Rake (Welded Assy) (Effective with 14-72 - 14624)	2
2	240854	SHEAVE, Reel	1
-		BOLT, 5/16 - 18 x 5/8) Hex Hd.	
-		LOCKWASHER, 5/16) Sheave to Reel	10
-		NUT, 5/16 - 18 Hex)	
3	146808	SPINDLE, Front (Welded Assembly)	1
4	146535	SPINDLE, Rear (Welded Assembly)	1
5	146810	SHIM, 1-1/32 x 1-1/2 x .029.....	AR
6	146537	COLLAR, Spindle, Rear	1
7		PIN, 1/4 x 1-5/8 Roll	1
8	149051	BEARING, 1 x 2 x .590 Roller.....	4
9	146811	SPACER, 1 x 4.5 Pipe.....	1
10		LOCKWASHER, 7/8)	1
11		NUT, 7/8 - 9 Hex) Front Spindle to Reel	1
-		BOLT, 1/2 - 13 x 1-1/2 Hex Hd.)	3
-		WASHER, 1/2 Flat) Rear Spindle to Frame	6
-		LOCKWASHER, 1/2)	3
-		NUT, 1/2 - 13 Hex)	3
12	148227 *	HOUSING, Tooth Bar Bearing	10
13	148166	BUSHING, Tooth Bar.....	20
14		BEARING ASSEMBLY, Tooth Bar.....	10
14A	148164	WASHER, 49/64 x 2 x 1/8 Countersunk.....	10
15	97632-S	RING, Snap Internal.....	10
16	148163	CUP, Bearing.....	10
17		NUT, 3/4 - 16 Hex Slotted) Housing Assembly thru Reel	10
18		COTTER PIN, 1/8 x 1-1/2)	10
--	106964	PLATE, Reel Bearing (Used with Models 14-72 - 3501 to 14624)	10
19	148228	BAR, Tooth, 1-1/2 Square x 98-1/8	5
20		BOLT, 5/16 - 18 x 2 Hex Hd)	
--		LOCKWASHER, 5/16) Housing Assembly to Bar	20
21		NUT, 5/16 - 18 Hex)	
23	7500817	TOOTH, Rubber	AR
22	146829	SHIELD, Tooth Right.....	5
--	146828	SHIELD, Tooth Left.....	5
23	146545	TOOTH, Spring.....	50
24	146546	CLAMP, Tooth Spring.....	50
25		BOLT, 5/16 - 18 x 2 1/2 Carr.)	
--		WASHER, 5/16 Flat) Tooth & Shield to Bar	50
--		LOCKWASHER, 5/16)	
--		NUT, 5/16)	

* NOT SERVICED

Side Delivery Rake

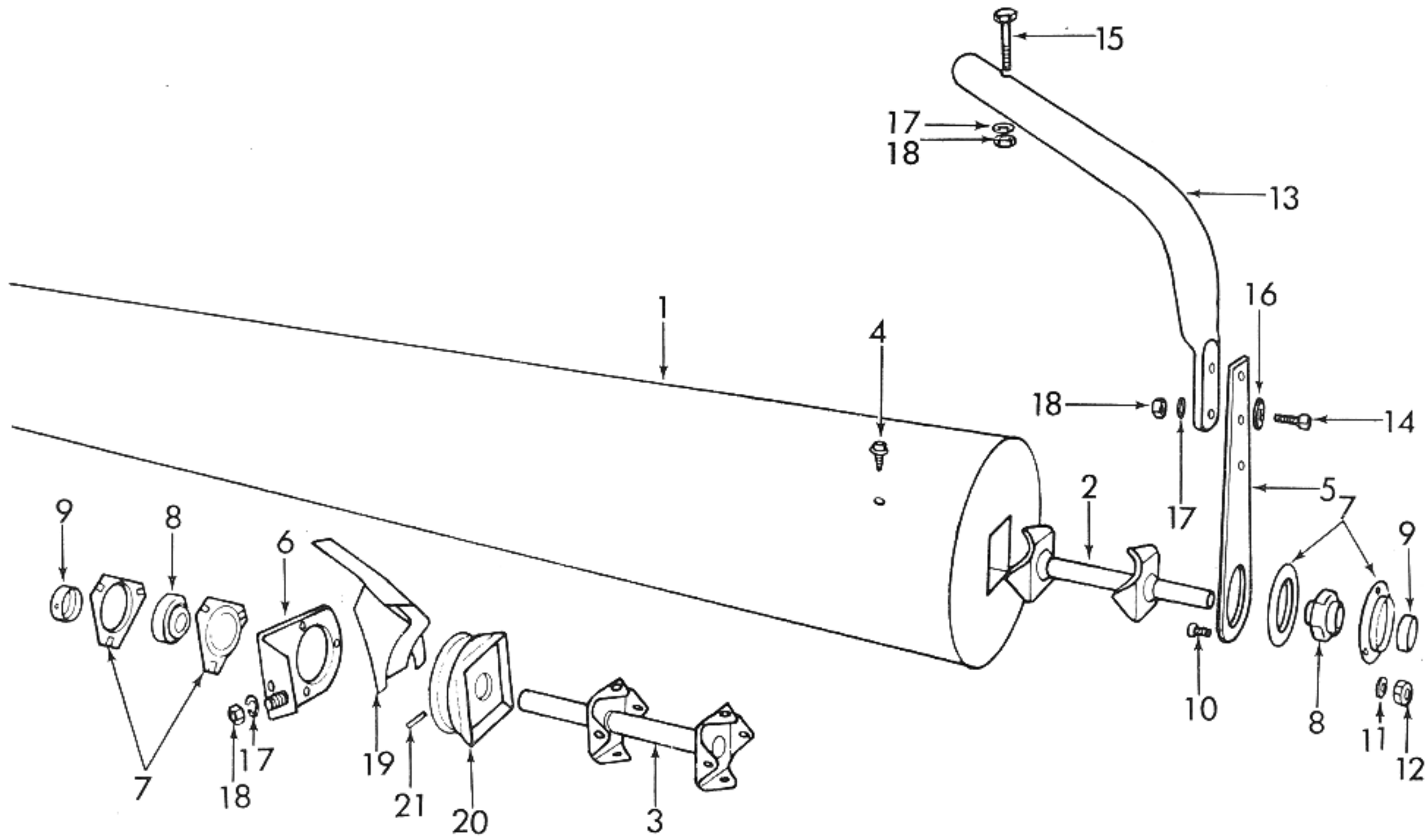


FIGURE 4 - STRIPPER PARTS

Side Delivery Rake

FIG.	PART NO.	NAME AND DESCRIPTION	QTY. REQ.
4		GROUP 1-4 STRIPPER PARTS <u>MODEL 14-72, 262, 263, 299, 300, 400, 419</u>	
1	145975	STRIPPER, Tooth (Welded Assembly)	1
2	146555	SPINDLE, Left (Welded Assembly)	1
3	146559	SPINDLE, Right (Welded Assembly)	1
4		SCREW, 5/16 - 18 x 1/2 Self Tapping) Spindle to LOCKWASHER, 5/16) Stripper	16 16
5	146565*	BRACKET, Stripped, Left	1
6	240830	BRACKET, Stripper, Right - (14-262, 263, 299, 300, 400, 419)	1
6	146564*	BRACKET, Stripper, Right - (14-72 Only)	1
7	142382	FLANGE, Bearing.	4
8	260369	BEARING, Stripper <i>RAQ 14N PPB...FAFNIR</i>	2
9	163893	COLLAR ASSEMBLY, Bearing.	2
10		BOLT, 5/16 - 18 x 7/8 Hex Hd)	6
11		LOCKWASHER, 5/16) Bearing and Flanges	6
--		WASHER, 5/16 Flat (14-72 Only) to Stripper Bracket	6
12		NUT, 5/16 - 18 Hex)	6
13	146563	SUPPORT, Stripper.	1
14		BOLT, 7/16 - 14 x 1 1/4 Hex Hd.)	4
15		BOLT, 7/16 - 14 x 2 3/4 Hex Hd.) Support & Bracket	2
16		WASHER, 7/16 Flat) to Frame	6
17		LOCKWASHER, 7/16)	6
18		NUT, 7/16 - 14 Hex)	6
19	147073	GUARD ASSEMBLY, Stripper Belt	1
20	147864	SHEAVE, Stripper Drive.	1
21	352506-S	PIN, 1/4 x 1 1/2 Spring - Sheave to Spindle	1

Side Delivery Rake

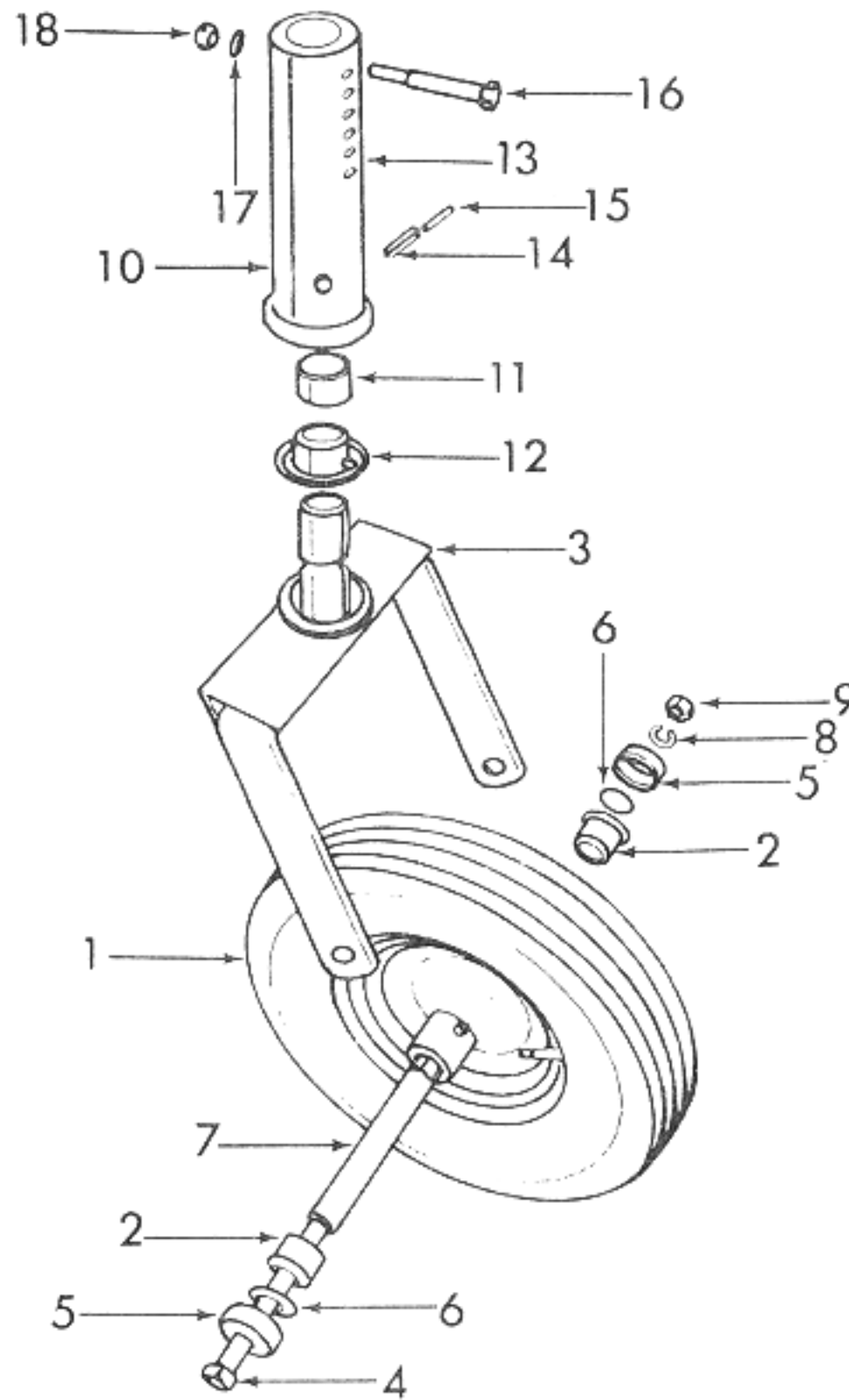


FIGURE 5 - GAUGE WHEEL

FIG.	PART NO.	NAME AND DESCRIPTION	QTY. REQ.
5		<u>GROUP 1-5 GAUGE WHEEL PARTS</u> <u>MODELS 14-265,419</u>	14-265 14-419
1	107846	WHEEL ASSEMBLY, Gauge Less 4 x 8 Tire & Tube	2
		Consists of Wheel plus:	
2	107849	BEARING, Wheel	4
3	144926	FORK,	2
4		BOLT, 5/8 - 1 1/4 x 8 Hex Hd	2
5	147077	CUP, Hub	4
6	147075	WASHER, Hub	4
7	144949	SPACER, .687 x 1 x 6-1/16 Tube	2
8		LOCKWASHER, 5/8) Fork to Wheel	2
9		NUT, 5/8 - 1 1/4 Hex)	2
10	144930	HOUSING, Gauge Wheel (Welded Assembly)	2
11	146780	BUSHING, Nylon	2
12	146781	BUSHING, Nylon, Flanged	2
13		PIN, 5/32 x 2-1/4)	2
14		PIN, 3/8 x 1-1/2) Fork to Housing	2
15		PIN, 7/32 x 1-1/2)	2
16		BOLT, 1/2 - 13 x 3-1/2 Sq Hd)	2
17		LOCKWASHER, 1/2) Gauge Wheel to Frame	2
18		NUT, 1/2 - 13 Hex)	2
--		BOLT, 7/16 - 14 x 2 Hex Hd)	2
--		LOCKWASHER, 7/16) Gauge Wheel Adjusting	2
--		NUT, 7/16 - 14 Hex)	2

Side Delivery Rake

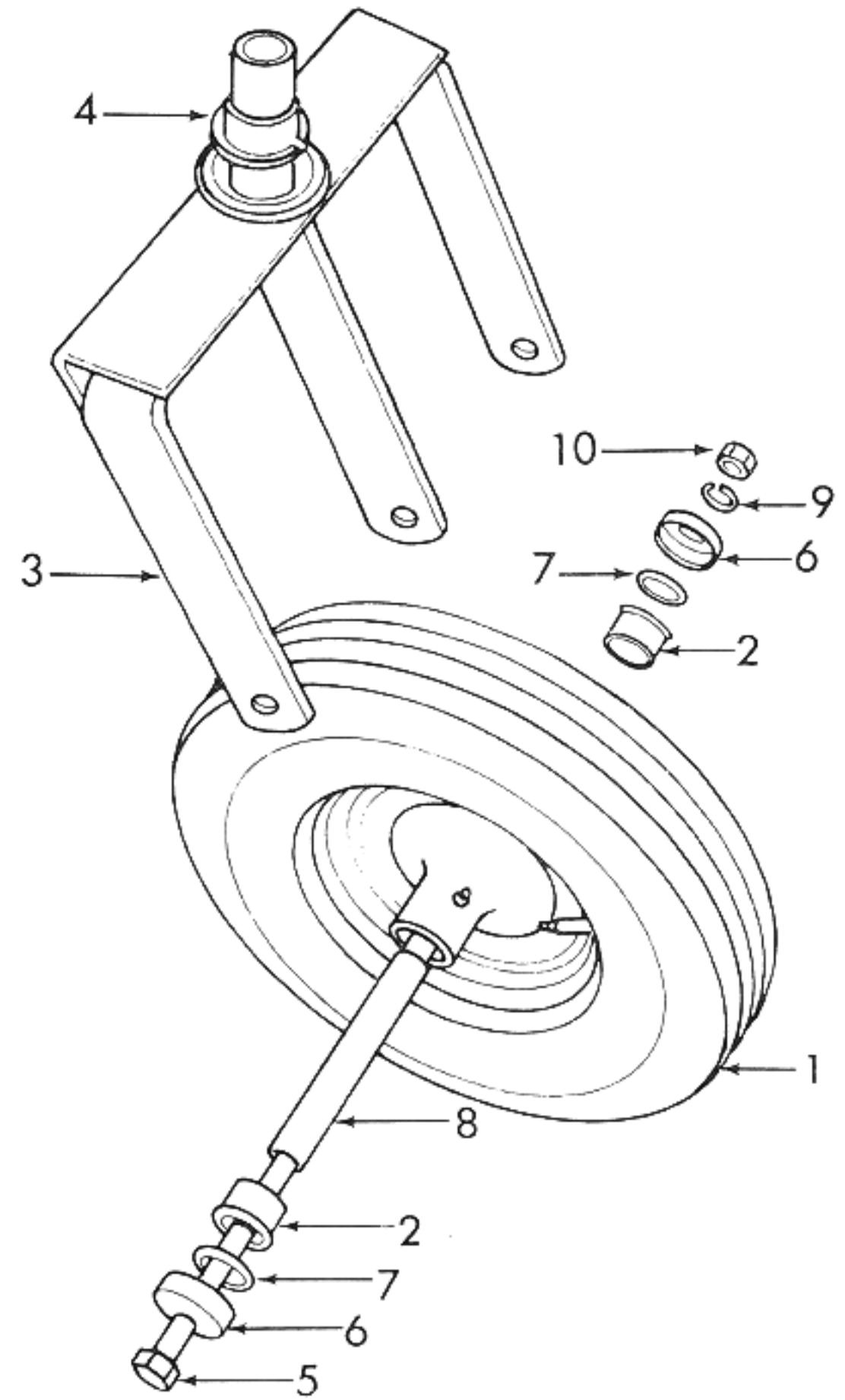
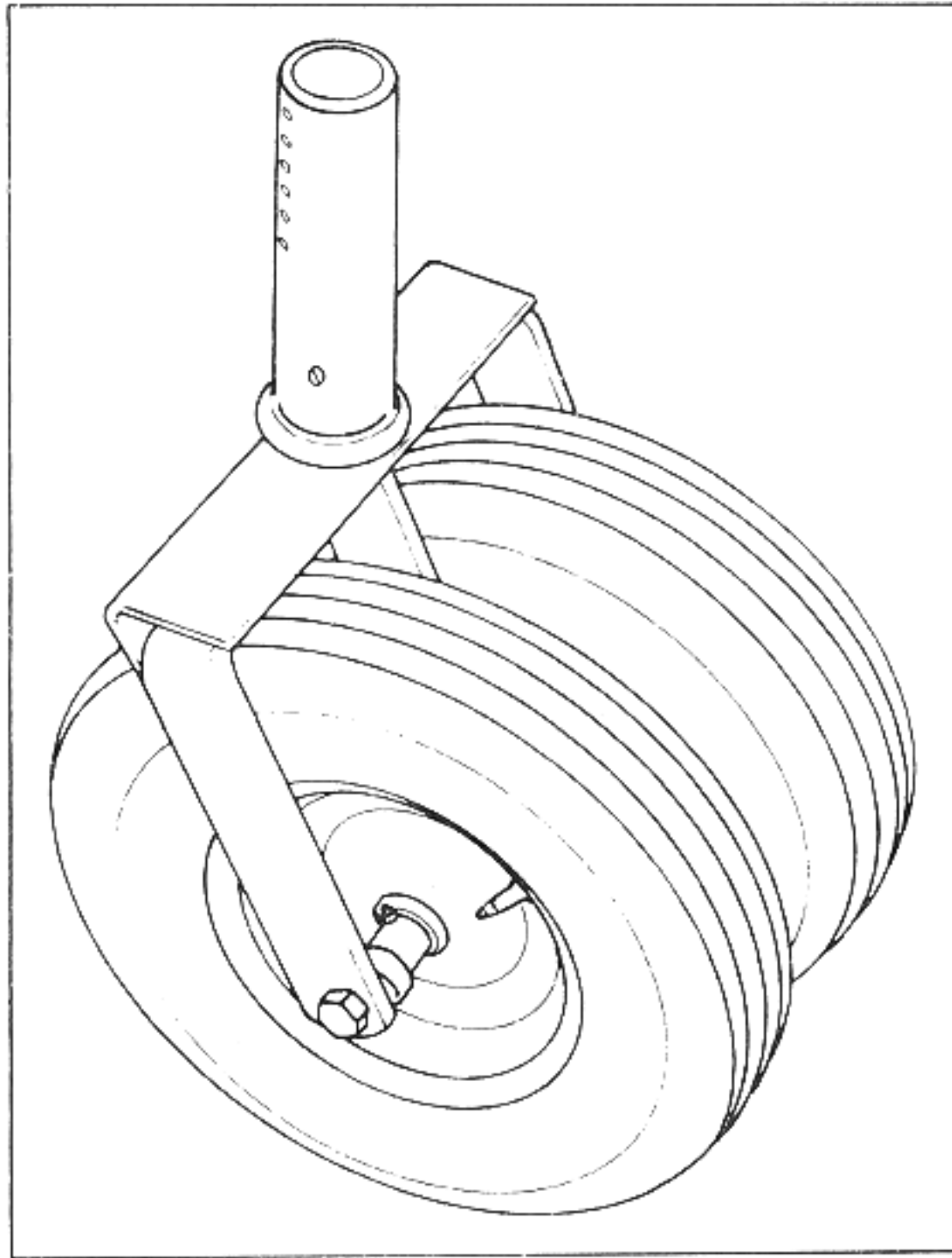


FIGURE 6 - DUAL WHEEL ATTACHMENT

FIG.	PART NO.	NAME AND DESCRIPTION	QTY. REQ.
6		GROUP 1-6 MODEL 14-115 & 14-266 DUAL WHEEL ATTACHMENT	14-115 14-266
1	107846	WHEEL ASSEMBLY, Less 4 x 8 Tire & Tube	1
		Consists of Wheel which is not serviced separately plus Bearings listed below:	
2	107849	BEARING, Wheel	2
3	149180	FORK ASSEMBLY, Dual Wheel	1
		Consists of Fork plus:	
4	146781	BUSHING, Flanged, Nylon	1
5	149176	BOLT, 5/8 - 11 x 14.5 Hex Hd	1
6	147077	CUP, Hub	2
7	147075	WASHER, Hub	2
8	144949	SPACER, .687 x 1 x 6-1/16 Tube	1
9		LOCKWASHER, 5/8	1
10		NUT, 5/8 - 11 Hex	1

Side Delivery Rake

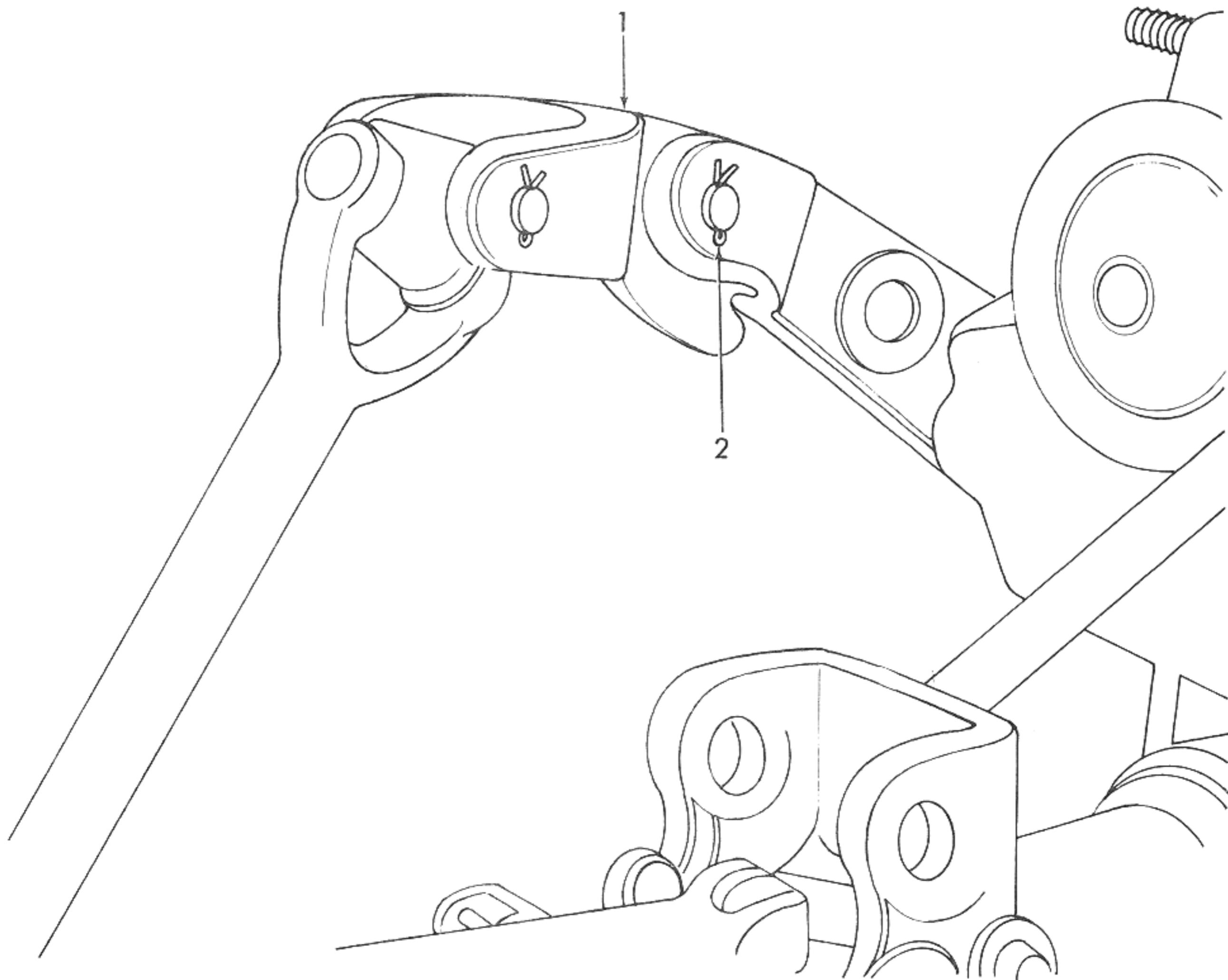


FIGURE 7 - ROCKER ARM

FIG.	PART NO.	NAME AND DESCRIPTION	QTY. REQ.
7		<u>GROUP 1-7 ROCKER ARM ATTACHMENT</u>	
1	240948	ARM, Rocker	AR
2	9N-595	PIN, Hydraulic Lift Fork Leveling	1
-		COTTER PIN, 1/8 x 1 - Attach Rocker Arm to Main Frame	1

Side Delivery Rake

DECALS

<u>Part No.</u>	<u>Description</u>	<u>Page No.</u>
149813	PTO Instructions	3
150435	Main Drive Instructions	3
105027	Series 503	3
7001542	"Ford" I.D. 4-1/2 x 25, 42 White Block Letters	3
7502413	"Be Careful"	3

Side Delivery Rake

NUMERICAL INDEX

9N-595	18	146838	8	240830	15
PBF-9590	3	146839	5, 9	240831	5
106964	11, 13	146842	5, 8	240832	10
106966	11	146843	8	240844	11
107846	16, 17	146913	7	240854	10, 13
107849	16, 17	147073	15	240948	18
140428	6, 9	147074	5, 8	242117	11
140578	3	147075	16, 17	243133	8
140854	5, 9	147077	16, 17	260139	4, 6
142382	15	147081	4, 7, 11	305088	8
144926	16	147082	15	7001542	3
144930	16	147864	15	7500817	11
144949	16, 17	147879	3	7500856	11
145975	15	148163	11	7500973	11
146510	3	148164	11, 13	7500974	11
146534	13	148166	13	7500989	11
146535	10, 13	148227	13	7501035	5, 6, 8, 9
146537	11, 13	148228	13	7501098	6, 9
146543	5, 8	148466	5, 6, 9	7501602	6
146545	11, 13			7502283	6
		148822	5, 8	7502413	3
146546	11, 13	148824	5, 8	7502432	6
146549	3,	148825	5, 8	7502433	6
146550	3	149050	7	7502434	6
146555	15	149051	4, 7, 11, 13	7502435	6
146559	15	149076	5	7502436	6
146563	15	149079	6, 9	7502438	4
146564	15	149116	5, 6, 9		
146565	15	149147	5, 6, 9		
146568	8	149176	17		
146572	5, 8	149180	17		
		149813	3		
146594	7	150435	3		
146607	5, 6, 8	150527	3		
146616	8	163893	15		
146619	8	164152	8		
146620	5, 8	164153	8		
146780	16	164154	8		
146781	16, 17	173023	8		
146790	8	210392	6		
146791	8	240166	13		
146793	8	240789	3		
146796	3	240793	5, 6		
146802	8	240795	4		
146808	10, 13	240801	5		
146810	7, 11, 13	240802	5		
146811	11, 13	240803	5		
146818	5, 8	240814	5		
146828	13	240815	11		
146829	13	240817	11		
146835	6, 9				
146937	6, 9				